



PREFABRICATED SWIMMING POOLS rivierapool.com

RivieraPool[®]
PREFABRICATED SWIMMING POOLS • WHIRLPOOLS

Living by water...

Back in 2011, the Design-Line ("D-Line") by RivieraPool was awarded Schwimmbad & Sauna's "Golden Wave" for its modern design and customised realisation of water in the garden: Function and luxury go without saying. Each RivieraPool is, and will remain, a standard product that has developed from our experience of well over 10,000 installations over 45 years.



The Innovation Award of
Schwimmbad & Sauna

**GOLDEN
WAVE 2011**

Serie „D-Line“: „Golden Wave“
award second-place winner
in category swimming pools.

The calming effect of water, the invigorating peace of a well-designed garden and the harmony that your "outdoor living room" can radiate... water is always at the centre of such a garden. It is there to provide invigorating or restful moments. People today want water as an integral component of their garden, to maintain and invigorate body and spirit. This is not simply a desire for a swimming pond or swimming pool. Rather, these are naturally placed bodies of water, stylishly incorporated in your personal setting. When this water is also a fully-fledged pool, then we are talking about D-Line: The ready-made pool series from RivieraPool.

D-Line is a symbiosis of ambience and function. D-Line has an absolutely minimalist appearance. Clean lines, clear

structures and many chic design options for individualists. With absolutely no intrusive technical elements, these pools are always the focal point of the garden, holding the other elements together. Clean lines provide more freedom for all types of individual design: a pool deck made from natural stone, a waterfall with lighting effects. Stepping stones across calm water. Gabion walls and real wood terraces, and much more ... A handful of ideas, stylishly executed – that is what makes the difference.

Discover some design options for your water garden on the following pages.



Our D-Line - more than a swimming pool...



RivieraPool.com

ANCONA D-Line



Five steps: Stylish & discreet

"Ancona" has what many purists want: Absolute calmness and restraint in its lines. Even the five steps and the angular, stylish handrail are still under discussion as they may still be too much for super-purists. It can only look this way if form follows function: This is the minimum possible. Non-slip steps, grippy stainless steel, rectangular pool. This is what "Ancona" looks like in the D-Line series. Even the current and massage installations are fitted as discreetly as possible. They can be clearly felt - but hardly seen. The coping stone runs serenely around the water surface - with one nice exception: The infinity edge, the highlight of the pool: stylish design with a panoramic view.

A classic, rectangular pool with a certain finesse: The infinity edge opens up the view of your surroundings...





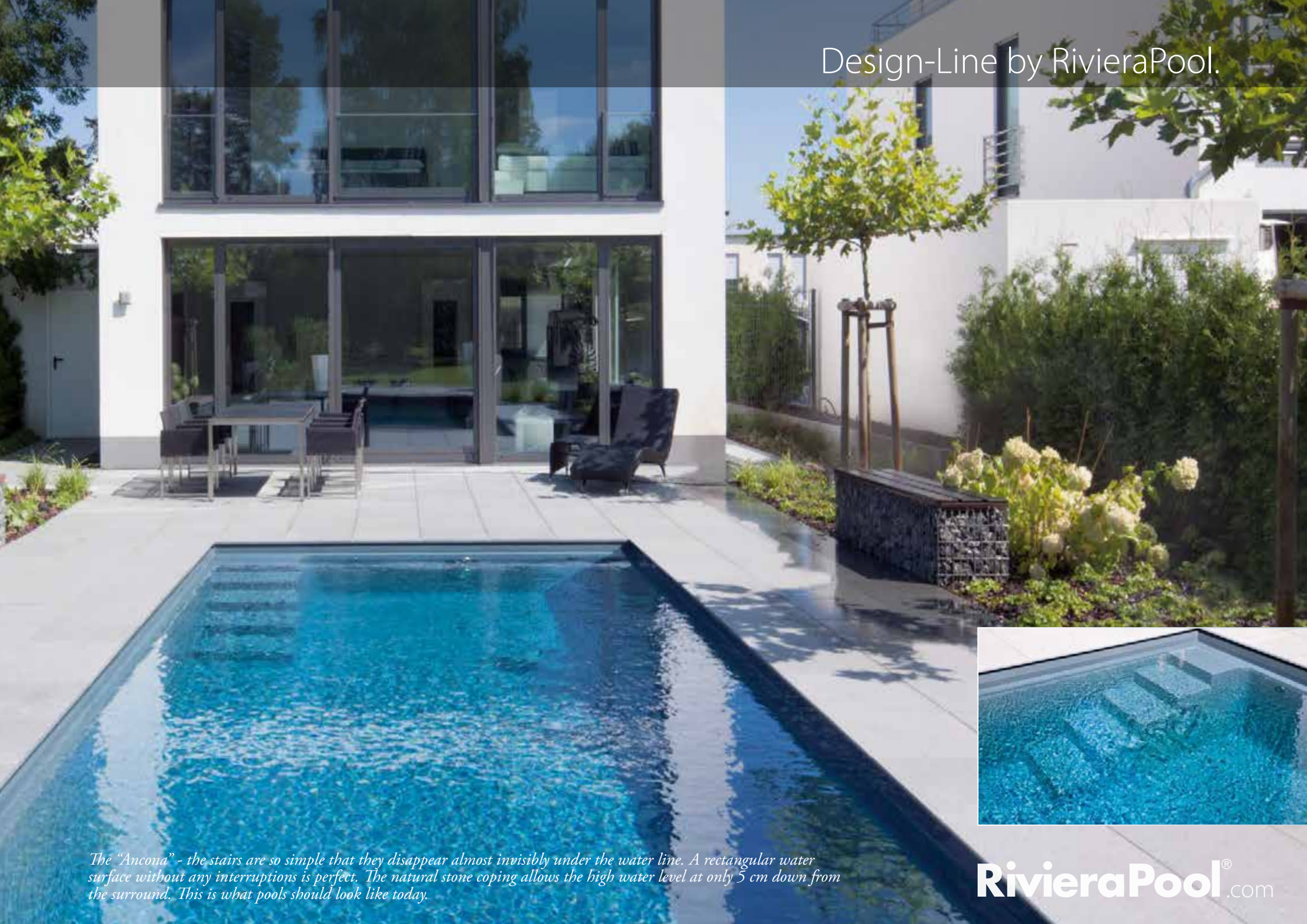
ANCONA D-Line



The Ancona 370: Contemporary pool design for your home. Linear and puristic: this pool is wonderfully at home in a modern environment.



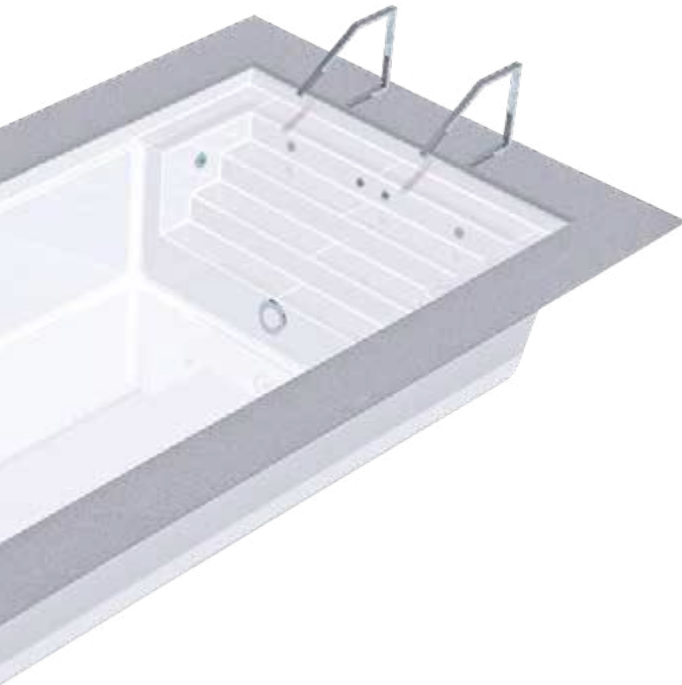
Design-Line by RivieraPool.



The "Ancona" - the stairs are so simple that they disappear almost invisibly under the water line. A rectangular water surface without any interruptions is perfect. The natural stone coping allows the high water level at only 5 cm down from the surround. This is what pools should look like today.

RivieraPool.com

LINEAR D-Line



Four steps: design across the whole line

Quite simply, "Linear" has only straight, clean lines leading to the water, across the entire width of the steps. The Granicite coloured pool surface forms a perfect unit with the dark, natural stone, providing a harmonious transition into the water. This gives ideal water colour, even when the sky is overcast - and also is effective in winter when no-one swims.

The current and massage installations are fitted as discreetly as possible. They can be clearly felt - but hardly seen. Ideally, the Q4-counter-current installation is located in the pool, and the suction fittings are at the back in the roller shutter box - this then produces a water roller as a fitness area, as active as anyone could wish.



Design across the whole line ...



LINEAR D-Line



Linear in colour Granicite stone grey

The most beautiful thing you could wish for at home is a balmy summer's night by your own pool. It is not just the softly shining water but also the environment that makes the evening so unique. Light, fire, a glass of good wine and tranquillity provide a perfect way to unwind. A pool offers so much more than just invigoration. Our Linear is the perfect choice for your pool garden.

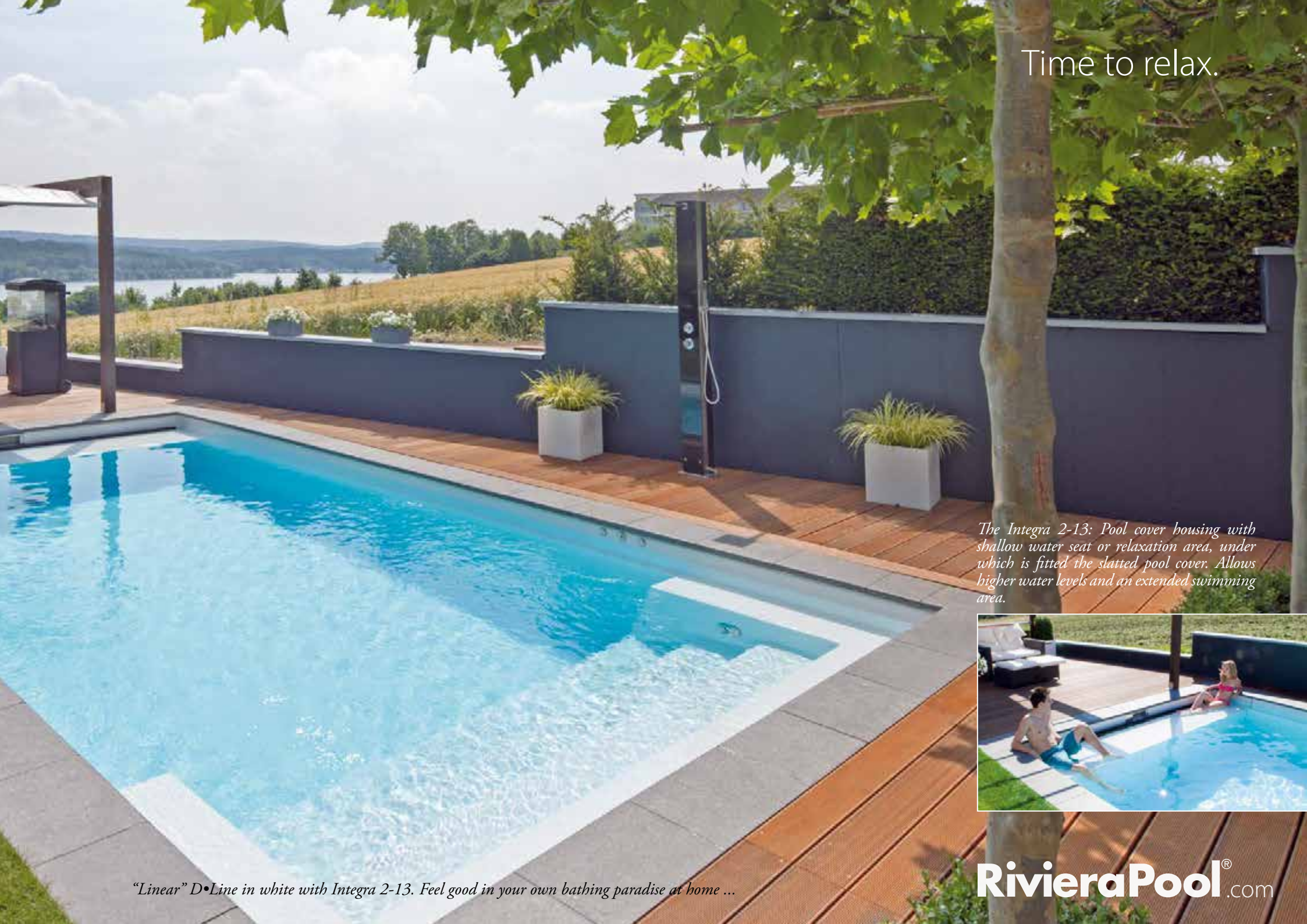


10 *MIRROR-LIKE water surface...*



Evening ambience in your pool garden ...

Time to relax.



The Integra 2-13: Pool cover housing with shallow water seat or relaxation area, under which is fitted the slatted pool cover. Allows higher water levels and an extended swimming area.



“Linear” D•Line in white with Integra 2-13. Feel good in your own bathing paradise at home ...

RivieraPool.com

MODENA D-Line



Design - Quality - Functionality.

Modena is a series of proven models that have been on our best-seller list for many years. "Modena" now has a completely new look. The concept has an impressive linear design and a variety of functions: either simple or with a technical shaft to house all the technology. With either a WetLounge or an infinity edge: Modena has a safe, 6-step entry, broad areas for sitting/lounging, various current and massage installations opposite the roller shutter or the infinity edge (optional).

In addition: You may want the WetLounge as an entrance, a calm-water zone, an area for relaxing or for the children. So much is possible: Modena.



A classic, re-imagined.



RivieraPool.com

MODENA D-Line

What does a modern swimming pool have to be able to do?

It should be safe, luxurious and inviting. A safe entry via comfortably broad steps, broad steps for sitting or lounging, with the best massage jets for targeted underwater massages. Counter-current swimming installations, providing everyday fitness. Modena has a preferred spot in the water for everyone. Modena is a stepped installation that could not be more versatile. Yet it is so simple that even design purists get their money's worth. No excess lines. Simplicity where it is possible, function where it is wanted: that's Modena.

A step for everyone - and everything. A pool that's an inspiration in every way. For many years to come.

1

Simple and functional

6-step entry that extends to the floor of the pool, extremely flat steps and a maximum stepping surface make entering the pool and climbing out not only comfortable but also safe. The large steps for sitting/lounging provide lots of space for the family - across the corner, at different heights.

Two additional LED spotlights illuminate the entire area at night and provide a cosy ambience.



2

FunPak and technology shaft

The FunPak is the ultimate counter-current and massage installation, which can come into full play in the Modena. Two powerful counter-current jets allow effective swimming training in one place. Six micro-jets provide thumb-pressure massage for your back muscles; two strong super-jets work on your lower back; one geyser jet is available for feet and calves.

A further option is the double-row air-bubble channel, which in the Modena takes on the function of the oxygen bed.

3

The WetLounge®

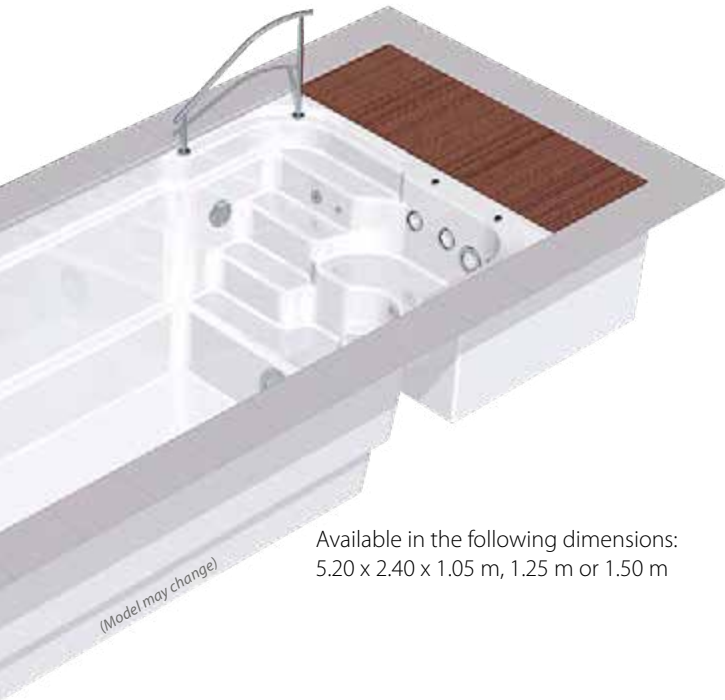
Seeing, feeling and enjoying water is more than just swimming and bathing. The WetLounge is a water terrace in and around the pool. It's a great eye-catcher at night with its coloured lighting and a firepit. A relaxation zone with loungers and cushions during the day, or simply just a play area for the children.

The WetLounge gives your pool garden a very special ambience.



MODENA 520 -

In three different depths.



Available in the following dimensions:
5.20 x 2.40 x 1.05 m, 1.25 m or 1.50 m

How much swimming pool does a person need?

In the case of the Modena 520, it is not the size that is crucial, but the unsurpassed functionality. The Modena 520 provides everything that a modern swimming pool needs in the smallest space: Counter-current installation, massage, aqua-fitness and ambience.

The Modena 520 has technology located compactly in a shaft; all the swimming-pool technology, counter-current and massage installations have already been installed and tested in the factory.

The Integra 2-13 underground roller shutter is also available for the compact Modena. The swimming pool opens and closes at the touch of a button. The roller shutter is invisibly and safely stored under a calm-water bench.



Compact and ingenious. Every day.



Modena 520 in silvergrey, Integra 2-13 and FunPak 4.2.

ROM



The classic, stylish swimming pool.

Classic and stylish. These are the attributes that belong to our "Rom" classic pool. It has clean lines and a round and generous entry with curved steps. Elegant and sophisticated, timeless and with a clean simplicity.

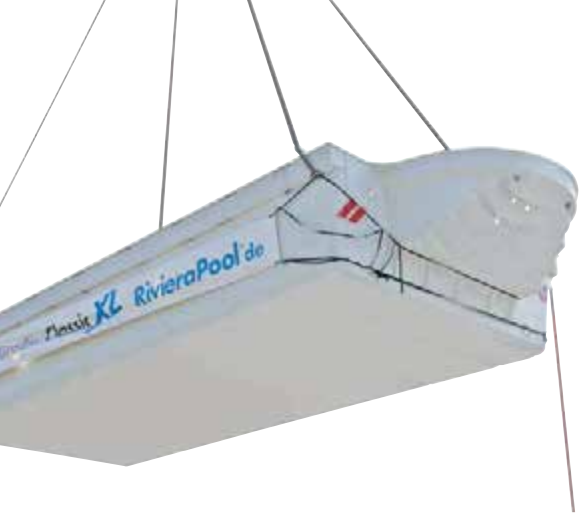
On request, a powerful counter-current installation can be integrated in the step. With two powerful under-water spotlights, it provides an unforgettable view in the evening.

In no time at all, your garden or your new spa area can look like this. "Rom" is the classic pool of timeless simplicity.



... with classic "Roman steps".





ROM *XL*

The RivieraPool in an XL format of 4.70 m in width, 10 m of swimming length, plus steps - no other prefabricated swimming pool provides so much space. Even in these dimensions, the XL RivieraPool is still produced and transported in one piece. Our special lorries deliver the finished swimming pool directly to your front door. In just a few days, these pools can be the centre-piece of your garden or indoor pool facility. With or without an overflow channel or various step installations, these pools make a great impression and offer plenty of space for long-term swimming pleasure.



XL for your fitness...



RivieraPool.com

KARA XL

D•Line

Added value for connoisseurs.

The "Kara XL" step installation is very simple and elegant. The additional metres of width provide the pool with a generous amount of space. This gives an area of water that is the largest ever produced by RivieraPool. An XL eye-catcher in the garden.

Kara's design with opposing steps provides the perfect space for a rivulet with a counter-current installation underneath. Thus, you can have an aqua-fitness zone - an invitation to daily training - in addition

to an elegant design. Further handrails can be placed in the pool so you don't lose sight of your fitness.



Added value for connoisseurs ...



LINEAR XL

D•Line

Simply more ...

This is the perfect "outdoor living room". Water is again the centrepiece of this garden. The architect doubtlessly understood how to let the atmosphere of the modern frame house radiate into the garden. The elegance of clean lines is also visible here. What other pool could ever have fitted? The stage is set with a chill-out lounge, modern loungers at the head of the pool, an open-air kitchen with an awning ... The appearance of the natural grey stone is enriched with warm, brown hues from high-grade wooden surfaces. Natural materials in a pure form

surround the pool in a masterly fashion. This installation clearly shows that D•Line is a symbiosis of ambience and function: This is underlined by the pool, with its distinctive luxury features such as perfect water quality, underground roller shutter cover with safety edge, non-slip steps across the entire width and stylish underwater lighting.

It should look like this: Daily fitness in a timeless DesignPool – Your water garden that adapts to your style.





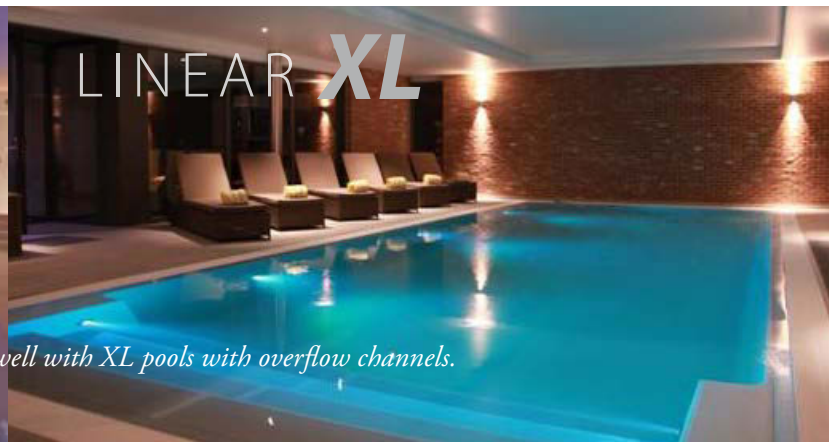
Pools with overflow channel

370 / **XL**

The XL luxury of an overflow channel.

If you want good hotel swimming pools, you know full well that swimming is never more comfortable than in a pool with an overflow channel: this means no wave formation during use. The displaced water slips easily into the overflow channel, to be reavailable after filtration.

In addition, when not being used, a smooth water surface makes the pool a treat for the eyes. This is as tranquil as water can be. Smooth transitions between buildings and the pool are possible by covering the channel with natural stone. The floor is simply immersed in the water. There is nothing more elegant.



*Indoor pool facilities and hotels do particularly well with XL pools with overflow channels.
There is nothing more spacious.*

...with a stone-covered channel.



The inline roller shutter cover provides a welcome calm-water zone. If necessary, it can be folded upwards on a hinge.

We can provide the prefabricated set for covering the channel with stone; the stone slabs themselves are not included in the RivieraPool range. Your RivieraPool specialist supplier can put you in contact with local specialists in natural stone.

RivieraPool.com

WET LOUNGE® – shallow water zone

RivieraPool brought the first shallow water zone for one piece pools onto the market. The novel concept of the water terrace, which extends the pool into a water filled lounge area, convinced the jury, with them awarding first prize for the Golden Wave Award 2015 in the category of swimming pools to RivieraPool.

The WetLounge is an extension of the pool, about two meters in length. In design terms it creates a 15 cm deep shallow water zone, a completely new idea: an outdoor living area with seating or reclining furniture in shallow water.

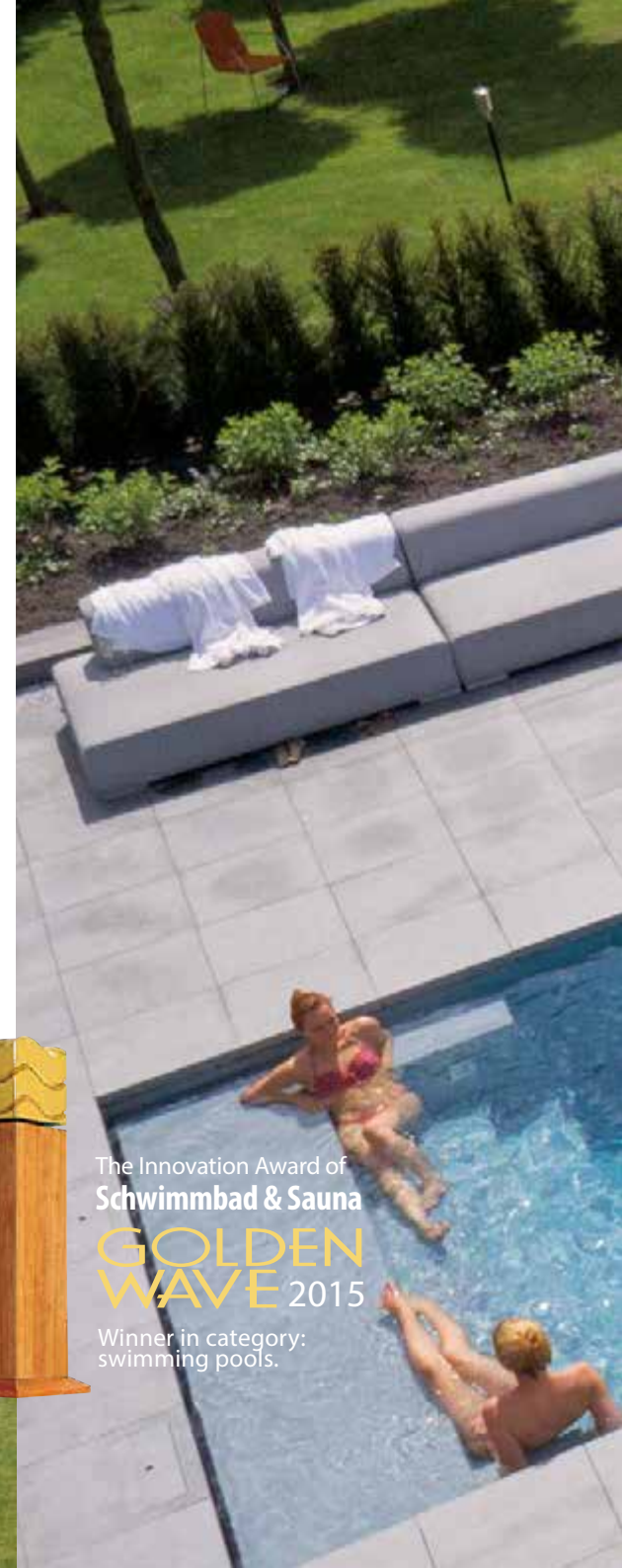
In the evening, a fire bowl in shallow water and atmospheric LED lighting create a cosy lagoons flair. "The developers have focused primarily on one thing: The emotional staging of the theme Living on Water", explained Peter Lang from "Fachschriften-Verlag" in his speech during the award ceremony in Stuttgart. "RivieraPool knows how to make the WetLounge the subject pool in a larger context. Aspects of horticulture and landscaping as well as including one's own home for social enjoyment, where you get together with friends and celebrate. Winning the Golden

Wave is an honour for us", explains Uwe Rengers, Marketing Manager at Riviera pool, "because it shows that we have made progress with our development: The WetLounge creates a space where relaxation and fitness becomes a new dimension".

Through the Golden Wave Award, every two years since 2005, "Schwimmbad + Sauna", Europe's largest pool and spa magazine, has honoured pioneering developments in the swimming-pool and sauna industry.



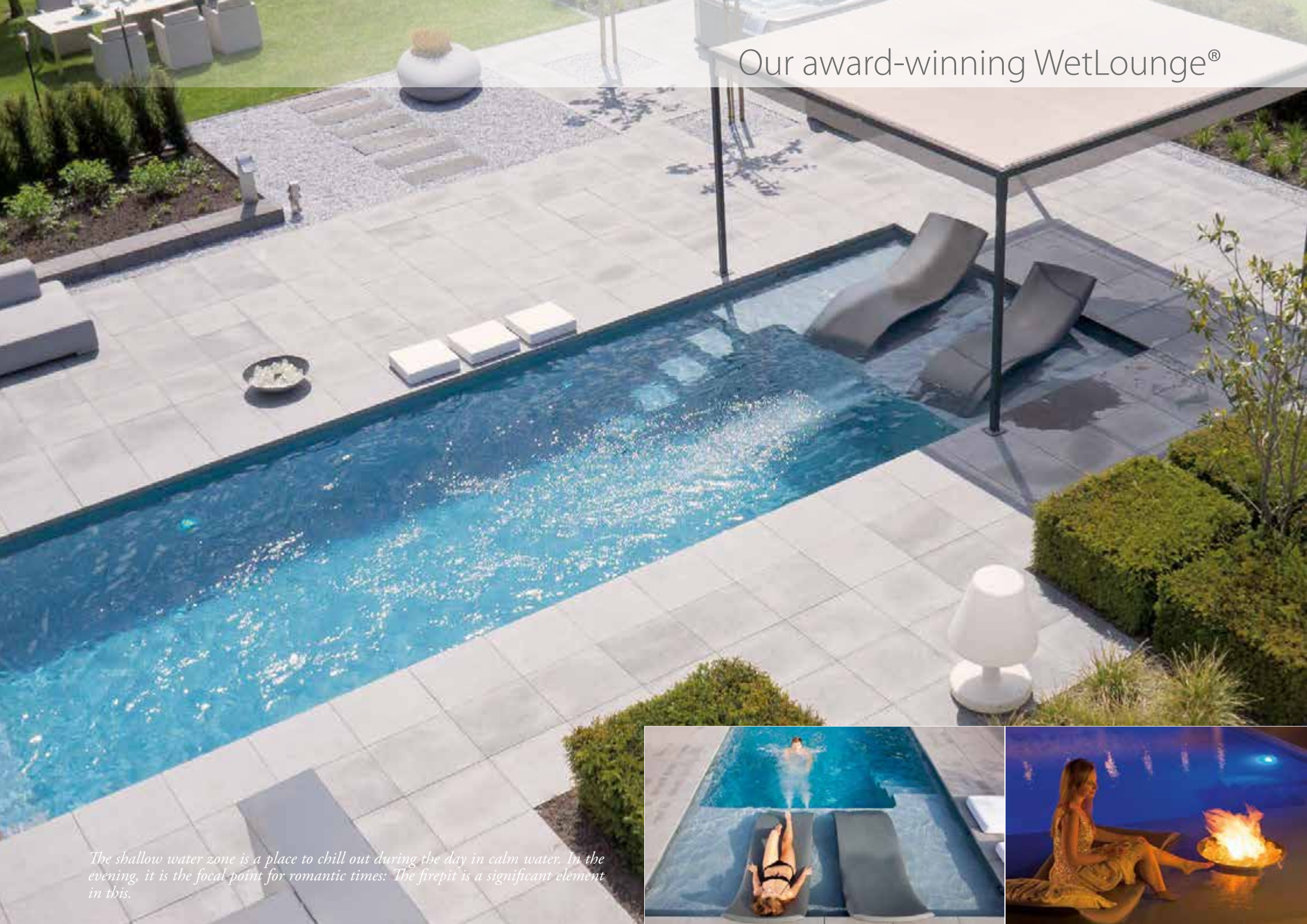
*Award ceremony Golden Wave 2015:
Peter Lang, editor - S & S, Guido Rengers
(Managing Director) and Uwe Rengers
(Marketing Manager) from Riviera Pool.*



The Innovation Award of
Schwimmbad & Sauna
GOLDEN WAVE 2015

Winner in category:
swimming pools.

Our award-winning WetLounge®



The shallow water zone is a place to chill out during the day in calm water. In the evening, it is the focal point for romantic times: The firepit is a significant element in this.



LINEAR RS D-Line



Linear RS - simply clever...

Where is the ideal place to store a roller shutter cover? Invisibly accessible, space-saving ... the answer is under the step!

This simultaneously provides two crucial advantages: The first step becomes broader and safer, producing an ideal shallow water area. The opposite wall of the pool is then free for the installation of a WetLounge, counter-current technology or, as shown here, an infinity edge.

As always - this "RS" is the ideal solution, both visually and technically.

Linear RS in Granicite stone grey with a roller shutter cover made from metallised silver polycarbonate (optional).



... constructed with vision.



The infinity edge opens up the view of your surroundings. Entry is via the step installation, which is simultaneously the roller shutter shaft. The channel has a stylish covering of pebbles.



Linear RS with an infinity edge. The combination of step installation with an integrated roller shutter shaft. The infinity edge points towards the garden, letting one's gaze sweep across the surroundings.

RivieraPool.com

Extensions

Your D-Line pool will be much more interesting with the use of good extensions. These include spring pools, rivulets, shallow water zones and all types and sizes of water surfaces that can be built onto the pool, either for decoration, more interesting uses or for biological water treatment.

Our extensions are being continually developed. You can find current information on the Internet at:

www.dlinepools.de

Springs & rivulets

All forms of natural water have their source, and so can your pool. Bring the water into the spotlight, before it flows into the pool. The springs and rivulets are made from the same surface material as your pool, so the design matches perfectly. Placing cleaved glass stones in the spring gives the water a unique and elegant appearance. The glass and water can be stylishly illuminated using glass-fibre light. The coping stone extends on the left and right over the rivulet, revealing a chic niche through which the water runs.



Cascade & WetLounge®

You can upgrade your pool garden using decorative and functional elements. Supplement your pool with a two-meter-long "WetLounge" shallow water zone. Sit and lounge in calm water.

A stylish atmosphere around the fire in the evening. Or simply have a "wet wall", a wall covered in natural stone with cascades that pour into a water pool, providing atmosphere and elegance for your garden. All are ready-made parts, whose form, colour and function simply fit.



Infinity edge

A lower-level overflow channel lets the surface of the water break away, thus creating a panoramic view. There's no better way to put your pool in the spotlight. If you have a view over a beautiful landscape or even a lake or the sea, it's almost imperative to have an infinity edge. The ready-made construction of the channel is aimed at just this situation. Talk to your specialist retailer - they can provide you with a suitable quote. We have the most interesting, award-winning installations ...



High water level

A high water level has a calming and spacious effect. The surroundings also reflect beautifully in the water. The garden ambience is shown on the calm water and radiates peace and relaxation. The surface of the water cannot be any better: the darker the pool, the clearer the image. And the pool still has this effect, even when it is raining or in diffused light.



Grabrails | handrails

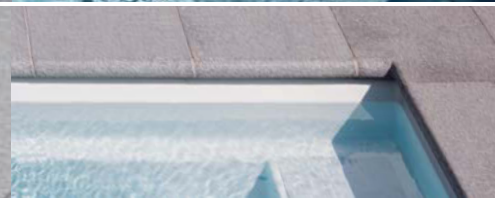
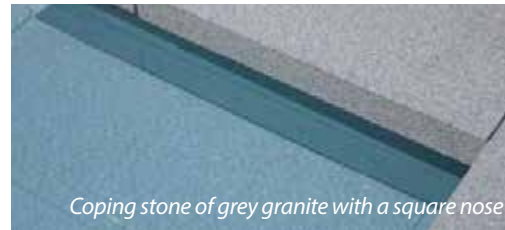
The D-Line stainless-steel handrails are produced exclusively for RivieraPool and are ideal for the linear design ... typically D-Line.



Stylish natural stone

The protruding coping stone conceals the edge of the water. The concealed edge makes the water seem flatter and larger. The steps can also be laid with natural stone. This highlights the linear design and visually draws the coping stone under the water.

The appearance of Granicite is so similar to natural stone that the installation looks as if it were cast as one piece. The material mix is significantly reduced, so the transition from the stone cladding to the pool is always harmonious.



The colours

The colour Granicite is the natural surface by RivieraPool that is similar to granite. It is ideal for use with natural stone slabs in light or dark grey. The effect is amazing: The pool looks as though it is made from stone, and perfect transitions are created to the coping stone.

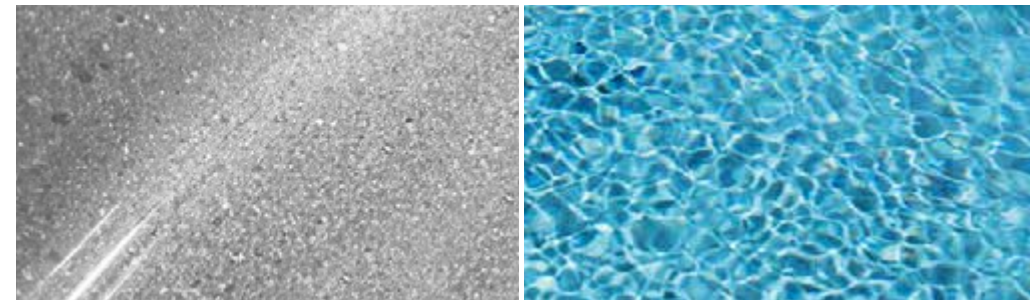
However, the most beautiful impression is seen in the garden:

The water appears calming and transparent. Granicite is confirmed straight off as the right choice. All of nature can be reflected in the water, because the pool colour does not dazzle. Just like in natural water. An additional effect: Even in overcast, rainy weather, the pool looks inviting, clean, clear and natural.

The photos shown are simply examples and can only approximate to the actual appearance due to printing limitations. Your RivieraPool specialist retailer can show you the genuine colours.

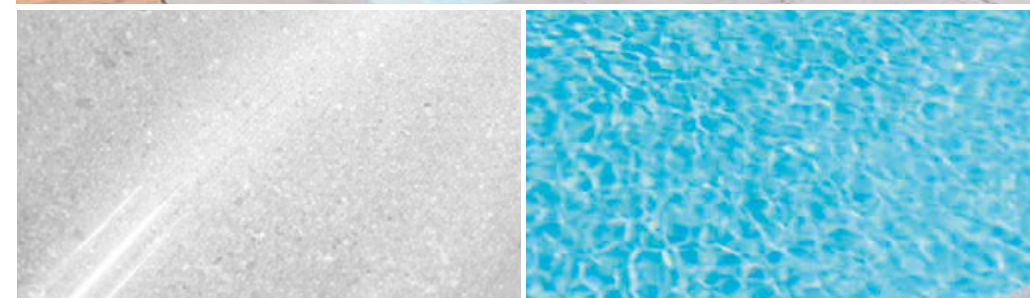
Granicite stone grey

The "Granicite stone grey" pool colour has an impressive look of natural stone. In conjunction with a covering of natural-stone slabs around the pool, this installation looks as though it were cast in one piece. Stainless-steel built-in parts enhance the quality of the surface. A Mediterranean flair can be produced by sleight of hand with this colour. A pool in "Granicite stone grey" looks bright and fresh in the sunshine next to vibrantly blue water. Although dark colours can lose their intensity over time, the natural impression of Granicite is retained.



Granicite grey

The "Granicite grey" pool colour is lighter than the stone grey but has the same look of natural stone. The water looks much lighter and shines pale blue, without dazzling. Stainless-steel built-in parts enhance the quality of the surface. A pool in "Granicite grey" looks bright and fresh in the sunshine and radiates freshness. This is a self-confident water colour, which clearly identifies the pool.



White

Against a white surface, water can glitter in the sun in its actual pale blue colour; polished stainless steel and azure-blue accessories provide contrast and enhance the quality. The water appears brilliantly bright and fresh, and an edge of white or pale grey stone is a suitable choice. Maritime styling can also be achieved with this pool colour. White is also very good for indoor pools because it brings out the lightest colour in the water. In the evening, it can be interesting when your pool appearance alternates softly in four or more colours.



Papyrus

The "Papyrus" pool colour lets the pool surface recede strongly into the background, and is particularly easy to maintain. The water shines blue more strongly because it is not as shiny as white. Papyrus is also unreservedly recommended for fans of coloured light, because it reflects colours strongly and lets them be displayed to advantage. A pool surround can be designed in various grey tones or even sandstone. Papyrus is unreservedly recommended for outdoor areas. We recommend steps in the single colour of Papyrus, or with silver grey accents.



Sand

Sand and soft beaches are the theme here. The pool is equipped with a sand-coloured surface that allows the surface of the water to shine a pure turquoise. The steps are in the single colour of sand, with beige or, even better, white accents, are clearly identifiable and form a harmonious unit with the sandstone at the edge of the pool. Little accents come from fitted parts and hand rails in white.



Silver-grey

The "silver-grey" pool colour lets the water appear strongly, provides a lot of depth and is particularly easy to maintain. The water shines a strong blue. Fitted parts made from stainless steel give the pool a sophisticated appearance. Silver-grey is modern yet timeless. It fits to wherever water should inspire the environment. Commanding without dazzle, rich yet restrained.



Thermosafe roller shutter cover

Tailor-made for your RivieraPool.

Our Thermosafe roller shutter covers are designed and constructed especially for use in RivieraPool prefabricated swimming pools. They accurately fit the pool dimensions, step shapes and arrangements of skimmers and coping stones. The size of the roller shutter shafts are designed according to the pool length so that they can take the complete roller shutter cover. The drive technology, with motor seat and pool-wall leadthroughs, are not only considered in the shape but are also installed in the factory.

The water-level controller and overflow height are also designed for optimal operation of the roller shutter.

Tested safety and durability.

Our Thermosafe covers are LNE tested and certified. In conjunction with the optional safety lock, they meet NF P90-308, and thus the only European safety law for swimming-pool covers. Polycarbonate profiles by RivieraPool are large-

ly resistant to hail and are registered in the Swiss hail-impact protection register.

Energy-saving, environmentally friendly and highly efficient:

80 % of the thermal energy is lost through the water surface through evaporation, convection and radiation. These thermal losses can be almost completely contained by covering with a roller shutter. And in addition: Solar roller shutters transmit solar energy into

the water when the pool is closed. This heats it up. The heat obtained cannot escape upwards. Global radiation data confirms that from May to August, an average of 160 kW per square metre per month can act on the pool surface. An outdoor swimming pool measuring 4 x 8 m can supply on average approx 100 kWh per day over this period. And that is with the pool closed.



Fig. left: Your RivieraPool Thermosafe roller shutter comes with a guarantee certificate.



Heating using the power of the sun.



- Energy efficiency
- Optimal security
- Elegant appearance

More than just a visual highlight:

- Safety for people and animals
- Protection against dirt and leaves
- Energy efficiency
- Elegant appearance

Our Thermosafe slat profiles come in two qualities:

Made from PVC in the colours white, grey or solar, and made from extremely durable, largely hail-safe polycarbonate in the colours solar and metallised silver, giving a sophisticated "metallic look".

White or grey PVC

This roller shutter cover is made for indoor pools. It keeps the water in the pool warm and provides a good energy balance. It scrupulously protects against coarse dirt and accidents. It is a solid cover for your pool, which can be locked using a key-operated switch.



Solar PVC

The Thermosafe solar PVC cover is the economical variant when it comes to energy-saving covers. Heat not only remains in the pool, but solar energy can also pass through the cover to additionally heat the water. The black underside of the cover keeps the water dark and thus prevents algal growth.



Solar polycarbonate

Polycarbonate is the sophisticated material for roller shutters: it is impact resistant and registered in the hail-impact protection register. The surface is highly transparent; the underside is black. This new type of "anti-algae profile" is a tongue-and-groove cover with an additional hollow chamber, which means that dirt within the profile teeth will not be visible.



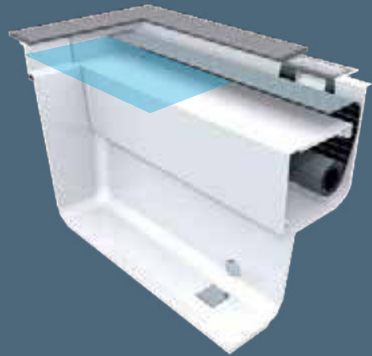
Metallised silver polycarbonate

This is the sophisticated variant. A stainless-steel look for your cover. The solar effect is less strong; the roller shutter reflects the sunlight more than the darker variants. However, it looks very modern and chic.

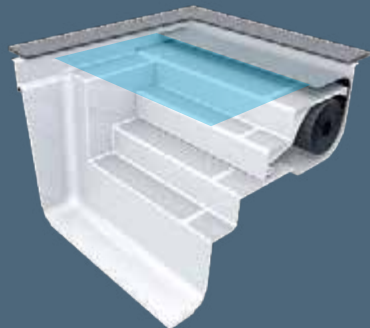


Roller shutter systems by RivieraPool

Thermosafe roller shutter covers are essentially installed in Riviera-Pools using an integrated construction method. Here, the roller shutter cover is rolled up below the water level.



The roller shutter shaft extends the pool by 50 cm.



The roller shutter shaft extends the pool by 25 cm.

Thermosafe benefits:

- The cover is installed invisibly below the water surface and needs no further masking.
- The cover is always rinsed with disinfected swimming-pool water; it remains clean, and dirt does not stick.
- Dirt sediments can be vacuum off using the skimmer or the floor cleaner.

For the integrated roller shutter in prefabricated swimming pools, there are **5 variants** available:

1

Integra 2-13 roller shutter shaft



- No loss of swimming length
- The cover functions as a calm-water bench below the water level
- No intrusive cover elements at the edge of the pool
- High water level, up to 5 cm below the coping stone
- Easy access thanks to the hinged cover; the lid can be opened easily and folded down

2

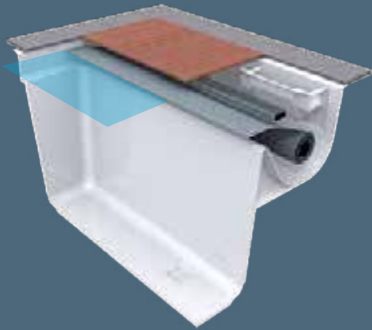
"Linear RS" roller shutter shaft



- Integrated roller shutter shaft in the step installation
- The upper step is wider as a calm-water sitting/lounging area
- The first two steps are designed as a hinged cover; the lid can be swung open

3

Roller shutter shaft



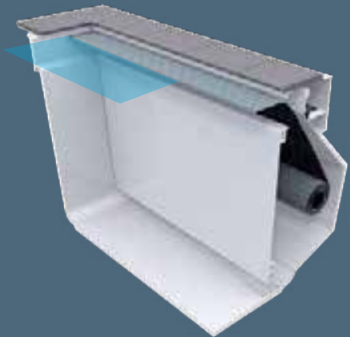
The roller shutter shaft extends the pool by 80 cm.



- No loss of swimming length, a straight pool wall, ideal for turning when swimming
- Cover made from wood or stone at the height of the coping stone, providing easier access to the roller shutter and technology

4

Roller shutter niche for skimmer pools



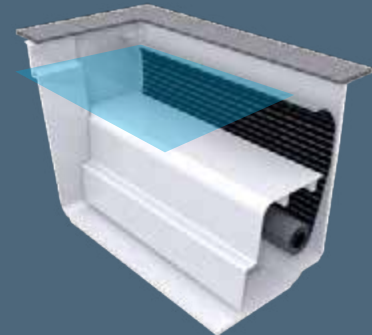
The niche extends the pool by approx. 35 cm, reducing the swimming length by approx. 50 cm.



- A visually very discreet solution in the pool colour. Enclosed, with a straight front wall to the pool, ideal for turning when swimming
- The roller shutter is located under the pool coping stone, behind the pool wall and emerges through a slot below the water level. Lower step at the base of the niche for ease of cleaning the shaft
- An integrated skimmer is located in the angle of the niche; the cover is accessible from above
- The suction fittings of the counter-current system can be ideally "concealed" in this version

5

Roller shutter fitted wall with "Inline" bench



Extends the pool by approx. 30 cm, reducing the swimming length by approx. 62 cm.



- Inline bench in pool colour, factory fitted, optional air-bubble system, for 370 and XL Inline bench. Roller shutter fitted wall for fitting a roller shutter at the base of the pool. Ideal for overflow-channel pools. The cover is hinged and can be folded upwards.

Quality: made in Germany.



The interior of your RivieraPools is constructed from **7 layers** . Each in its turn has a very specific function to meet the particular requirements of swimming-pool construction. In combination, they are responsible for the unique properties of your RivieraPool.

Colour-fast, easy to maintain, gentle on the skin

- 1** Duracolor 90 HD. The synthetic layer of high-density colour carrier for high-stress swimming-pool surfaces.
- 2** A fine-cell layer to minimise fibre prints on the high-gloss surface. This makes the pool noticeably smoother.

Resistant to osmosis thanks to epoxy acrylate

- 3** Robust carrier layer made from high-strength matted fibres, chemical-resistant fibre-glass.
- 4** Fine layer of fibre-glass as a base layer.
- 5** Ceramic interconnecting layer to create a homogeneous and durable structure. All layers are embedded in highly resistant epoxy acrylate.

Insulation saves energy and protects your budget

- 6** Insulating layer made from rigid polyurethane foam: 30 mm in the floor and 20 mm in the walls.

Stabilization

- 7** The back-up material provides the pool with an outer layer and a sandwich construction, which makes the wall structure extremely stable. Steel inserts in the long walls provide dimensional accuracy.

Good reasons for a RivieraPool.

We do everything to ensure that your RivieraPool is robust and durable – so that generations after you can still enjoy perfect bathing pleasure. For us, this means: Consistent quality management: as a committed member of the AVK (Federation of Reinforced Plastics), our production engineers are investigating, along with our raw-material suppliers, how swimming-pool water, processing media and the environment may influence and affect the pool surface. Various disinfectants and different pH values and pool water temperatures play a particular role.

Mechanical influences from cleaning equipment are also taken into consideration.

Material qualities and processing parameters are then defined to meet these requirements. This results in a material quality that is tailored exactly for use in swimming pools. And, of course, the relevant test procedures, in which materials must resist various loads in practice. Our own quality-assurance system guarantees that only permitted qualities of raw materials are used. To this end, we test all of our incoming raw materials in our factory's own materials laboratory. In particular, all surface materials are tested regarding colour-fastness; glass and acrylate are tested regarding resistance to warm water. An acceleration effect allows a report to be made on the durability of the pool,

even before it is produced. Comprehensive production control not only guarantees that all production steps meet targets - we also think it is important to document each individual production step. The production order, material usage log, acceptance protocol and curing protocol are archived together with the original reference samples. We can then provide help even after many years, and our experience consistently flows into new products. This is the benefit of a series product.



“Test result: From the factory visit including the company's own laboratory and inspection of documentation, there are no reservations about identifying the product as possessing special properties of long-term durability against osmosis and bleaching of the coloured surface.”

Active member of the AVK-TV
(Federation of reinforced plastics)



Aktives Mitglied in der
Arbeitsgemeinschaft
Verstärkte Kunststoffe -
Technische Vereinigung
e.V. (AVK-TV)

20 years on water tightness
of the fibreglass pool shell.



RivieraPool guarantees long-term durability:

- 20 years** against leaks in the laminate of the pool body.
- 10 years** against the formation of blisters and delamination within the pool body.
- 5 years** against faults in fitted parts and pipelines.
- 2 years** against faults in electrical components, such as pumps, motors and heaters.

This applies across the entire European Union for private original purchasers of a RivieraPool ready-made swimming pool.



Robust & durable



20 years on water tightness of the fibreglass pool shell.

Tried and tested sandwich construction



Quickly built



Safe & economical



More than just a swimming pool ...

If you were buying a car, you would expect the manufacturer to consider safety, low operating costs, particularly energy consumption, durability and, above all, the driving pleasure. At the end of the day, it is a series product,

incorporating experience gained from thousands of sold cars and many years of development work. You can also expect the same from your Riviera Pool. A RivieraPool is also a series product, which has come to fruition

and been perfected over decades. The result: Stylish design, robust quality, outstanding functionality and suitability for daily use. Produced in our factory and ready for use within a few days.

The design concept:

- Designs are linear and timeless
- Surface colours look like natural stone
- Fitted parts made from stainless steel
- Modern coping-stone designs
- Unique hand rails
- Real wood additions
- Confident colours and styles

Additional heat and safety provided by solar cover. For polycarbonate roller shutters: 5-year guarantee

Safety concept:

- Roller shutter safety support edge
- Stabilised roller shutter slats
- Non-slip steps with coloured accents
- Hand rails for safe entry and exit
- Safety suction fittings to DIN standard
- Step construction: Step spacing to DIN standard

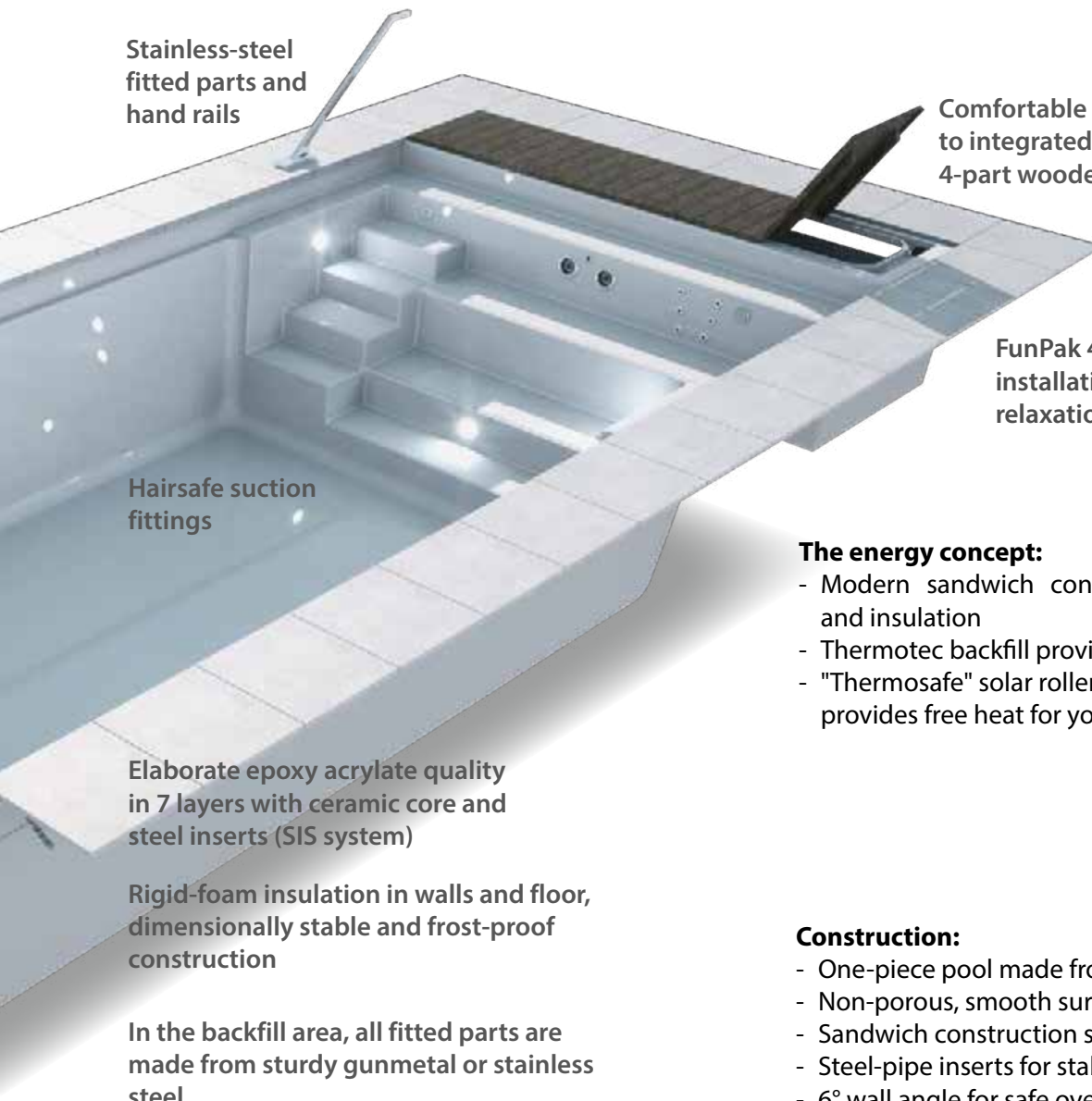
Integrated roller shutter safety edge

6° wall angle: Soft radii and corners. Straightforward cleaning of walls and floor using automatic floor cleaner

Easy-care, non-porous, smooth surface made from Duracolor 90 HD

"Integra 2-13" with calm-water sitting/lounging area, high water level, the entire swimming area is retained

... Design - Quality - Functionality



Stainless-steel fitted parts and hand rails

Comfortable access to integrated technology. 4-part wooden deck, hinged

Hairsafe suction fittings

FunPak 4.2: Current and massage installation for daily fitness and relaxation

Elaborate epoxy acrylate quality in 7 layers with ceramic core and steel inserts (SIS system)

Rigid-foam insulation in walls and floor, dimensionally stable and frost-proof construction

In the backfill area, all fitted parts are made from sturdy gunmetal or stainless steel

The energy concept:

- Modern sandwich construction provides stability and insulation
- Thermotec backfill provides additional insulation
- "Thermosafe" solar roller shutter cover provides free heat for your pool

Construction:

- One-piece pool made from epoxy acrylate
- Non-porous, smooth surface, easy to maintain
- Sandwich construction since 1970
- Steel-pipe inserts for stability
- 6° wall angle for safe overwintering
- Economical to operate

Integrated technology



Modern, considered roller shutter systems ...



... securely cover the water.



Counter current unit and massage installations



FunPak 4.2

Underwater massage

FunPak is a compact current and massage installation that turns your calm-water area into a centre of activity. Whether you want a forceful massage or a shallow surge of water – everything you need for your massage is here.

Everything is in the right place, everything is factory fitted.



This is where the real strengths of your RivieraPool really come into effect:

Its functionality:

- Counter-current installations give you the option of training on the spot. It doesn't matter how large the pool is.
- Calm-water zones provide a wonderful space to relax in the sun.
- The Fun Pak: A massage package that turns the calm-water zone into a centre of activity. 2 forceful back-massage jets. 1 Masterjet: For a soft, yet voluminous surge of water. 2 forceful counter-current jets for active swimming training. 1 floor geyser jet, a spring for massaging feet and calves.
- Aqua Fitness: Your system for daily aquarobics. Hand rails for exercising feet and knees; suitable grab rails for exercising the hips; arm rests for exercising the spine.

And the highlight: The 8-phase fitness concept – all of the above options combined in a well-rounded concept.

1

Counter-current system



The twin-jet counter-current installation forms the heart of your FunPak. The jets are driven by a 2.6 kW pump unit, which is switched on at the touch of a button. A motor operated valve optionally switches this water power to the massage jets or the counter-current jets. The surge of water can be intensified using the air vent.

Swim, sit in the pool, get fit –

More fun per m³



Special spa video:
aquafitness.pools.de



2

Turbojet massage jets



Two forceful air and water jets for your back. Can be directed and their force regulated.

3

Multijet massage jet



A soft, voluminous surge of water surrounds the body, as tingly as a soft sea breeze.

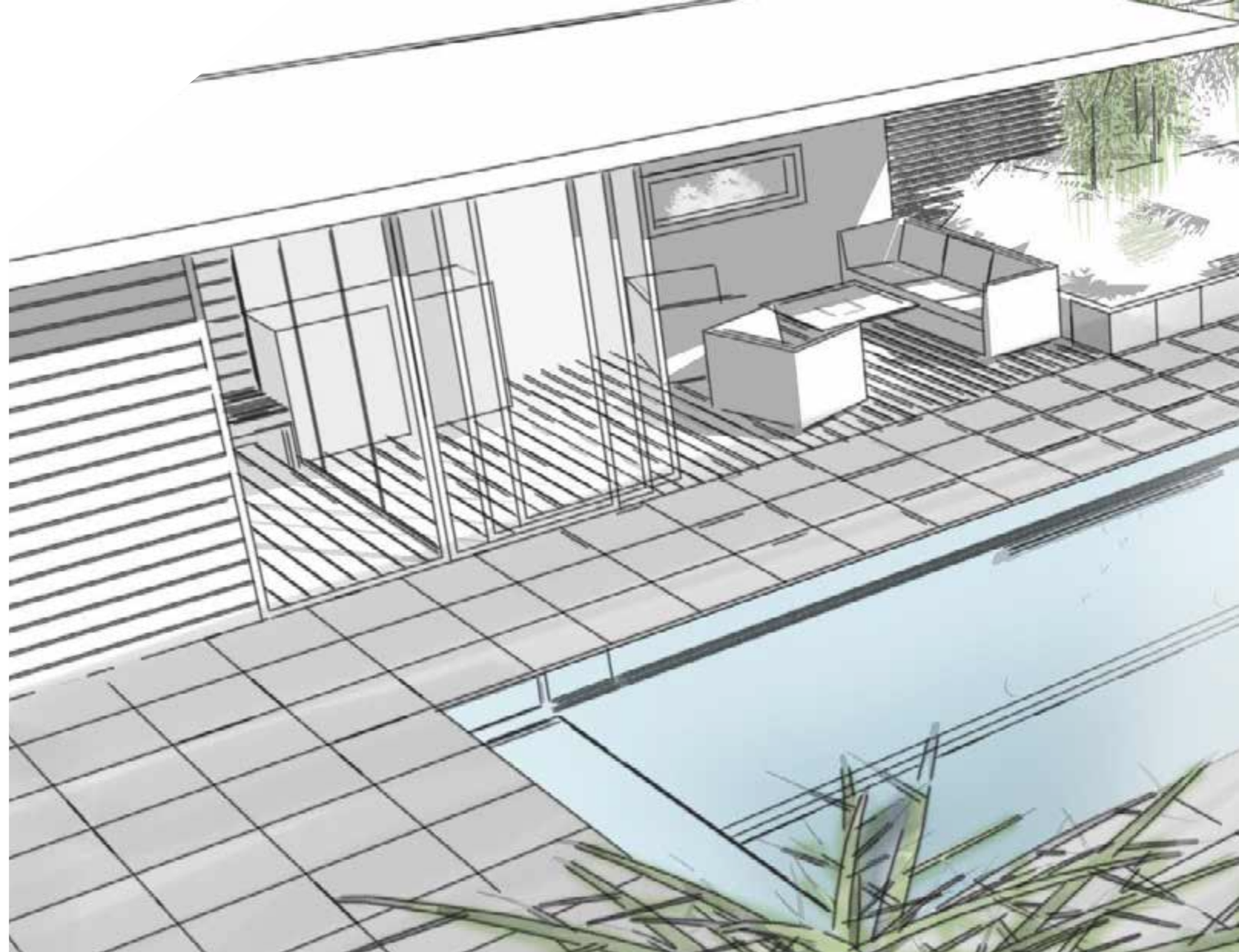
4

Floor geyser



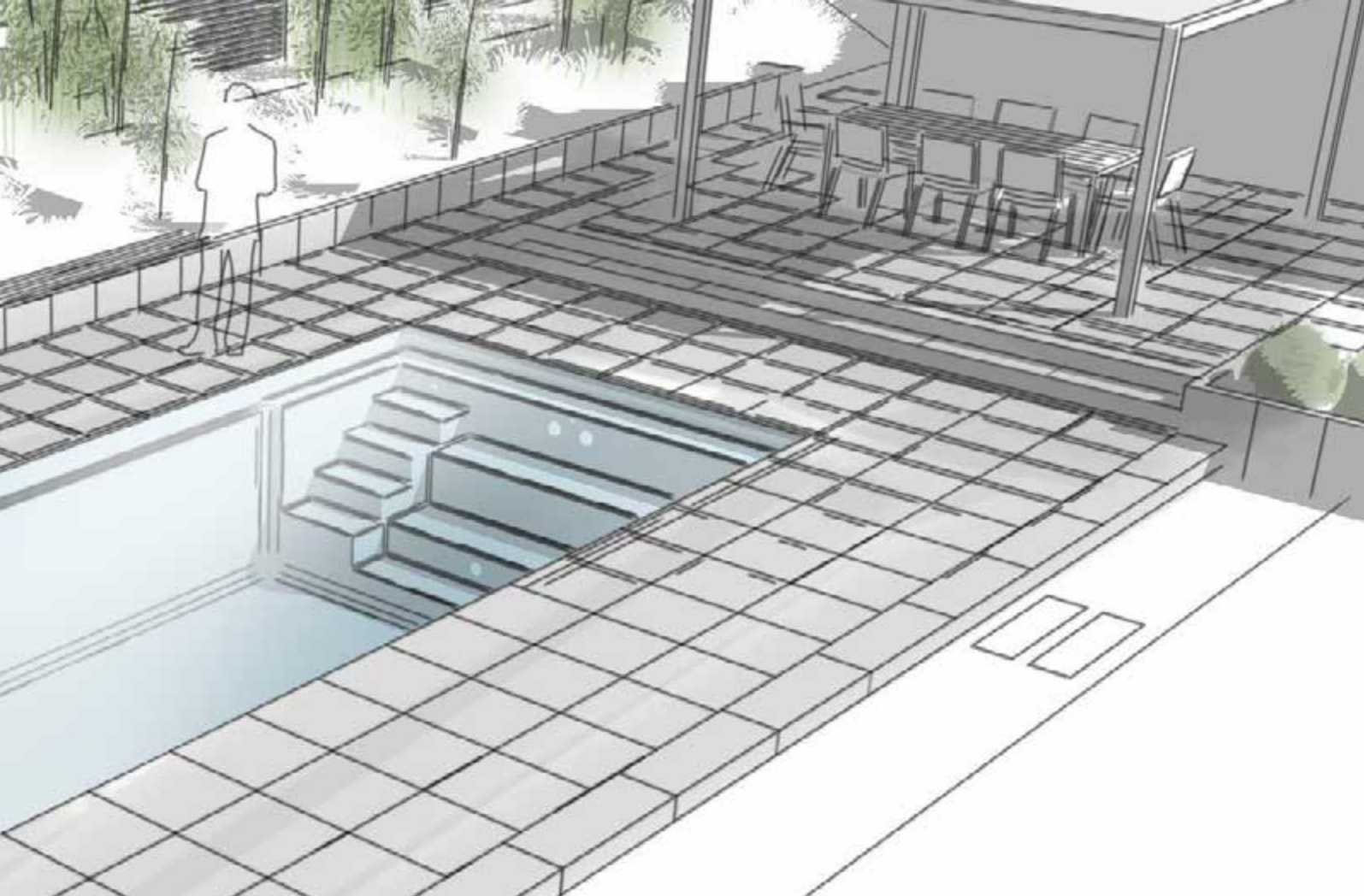
A spring that packs a punch: The forceful fountain shoots like a mushroom from the surface and massages feet, legs and the entire body.

Have a plan...



Your planner can come up with designs and graphic renderings using texture and light based on your garden layout. Often, even a sketch and “list of ingredients” can serve as a mood board. Ask your planner about this.

Computer modelling lets you generate various angles of view. This ensures the maximum security of design. These plans can be implemented by your local gardening and landscaping company. And the costs? Always cheaper than the annoyance of getting it wrong.



... Living by water.



Start to achieve your pool space by taking professional advice. Only in this way can you take into account all of the details that will be so important to you later on.

Delivery and installation

Delivery by special HGV, unloading by crane.



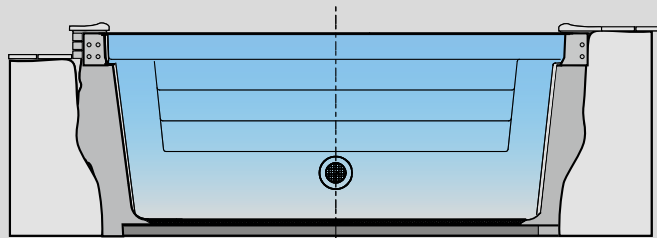
The pool is pre-assembled at the factory. Quick and easy installation.



Can be brought in by hand, crane or helicopter.



Installation with concrete backfill

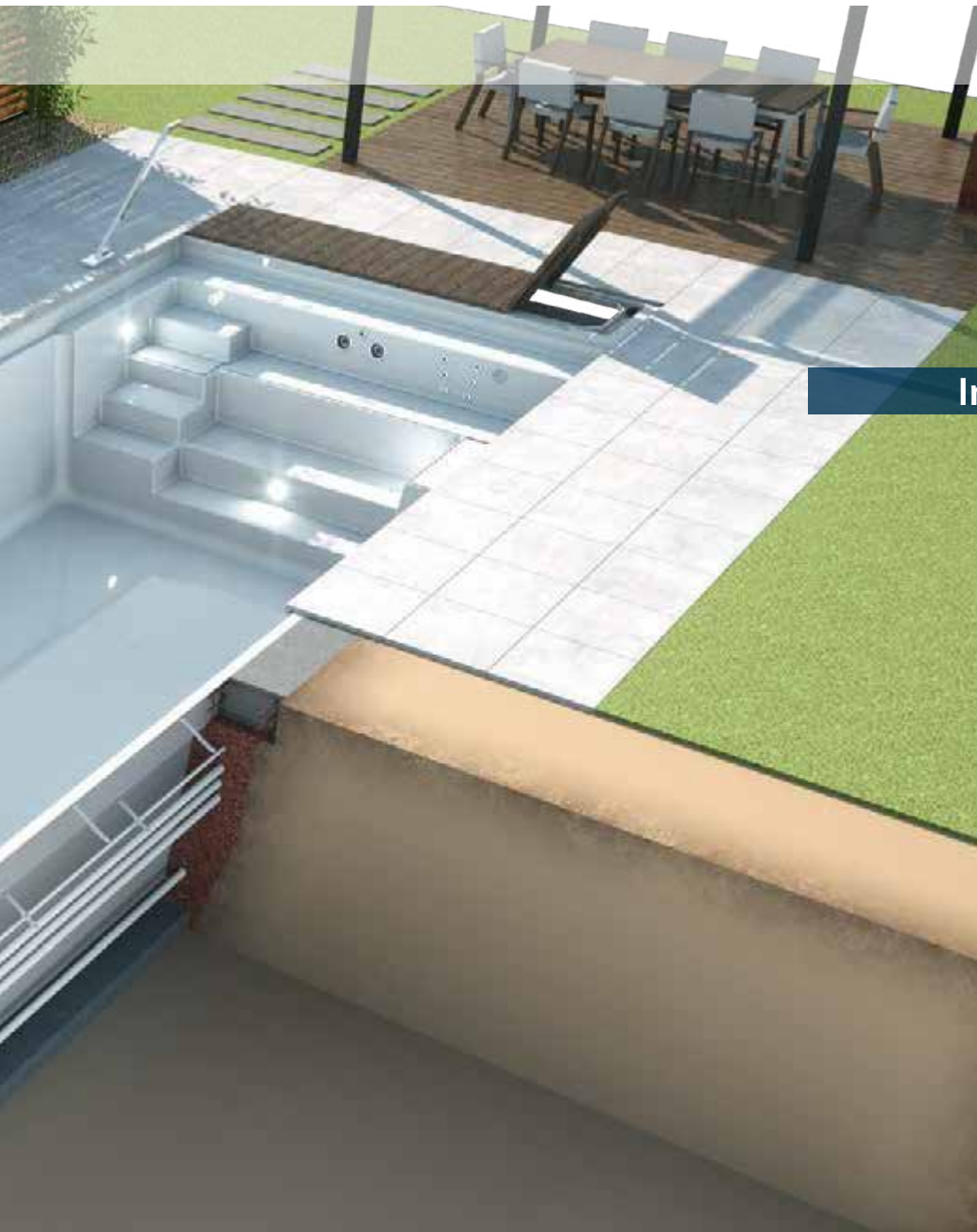


Installation of the base plate. Variants for outdoor swimming pools.

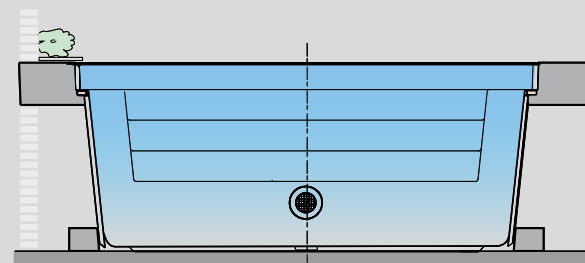
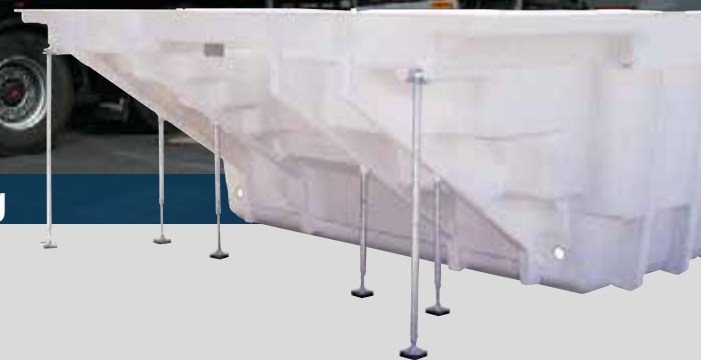


Concrete base plate. Backfill using lean concrete or modern insulating concrete.

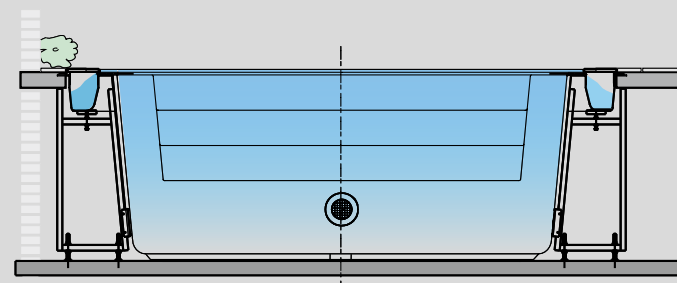




Installation with wall bracing



Installation as a self-supporting variant:
Wall braces laminated on.

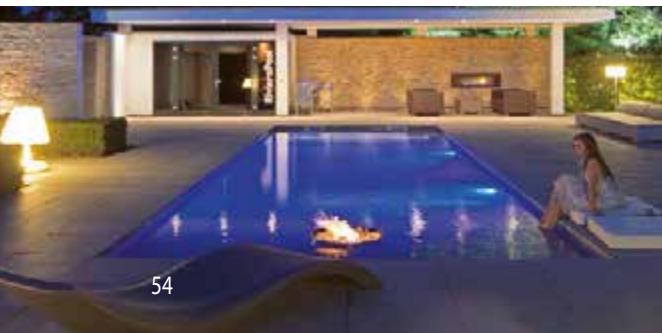


Self-supporting installation with overflow channel:
Steel wall braces.

See and test
everything first ...

RivieraPoolgarden

poools.info
in Geeste-Dalum/Emsland



Welcome to RivieraPool ...

We have over 2000 m² of "poools.info" factory exhibition space in Geeste-Dalum.

If you want to experience a balmy summer night by your D-Line, we warmly invite you to the Emsland. In the Riviera pool garden, we have the D-Line "Ancona with RS linear steps" with a "Wet-Lounge" in "stone-grey Granicite" and a "Kara XL" in "grey Granicite". These pools are available for testing at any time. A modern pool house is available for use as a changing room. You can also view and test all of the necessary technology here. Four further swimming pools, accessories, design ideas and whirlpools in our "poools.info" factory exhibition space. This includes everything, from an in-depth consultation, through a pool test to a stylish evening by the fire. Book a consultation with your specialist retail-

er or directly with us. We look forward to meeting you.

www.poools.info

New RivieraPool site in the Hofquartier in Taufkirchen near Munich.

In the new pool garden of the premium "Hofquartier" furniture centre, together with other exhibitors, RivieraPool is showing current trends in swimming pools and spas, and cutting-edge pool design for indoors and out. Natural pool technology can also be found here. In the pool garden, two leading manufacturers of pool technology will show their working systems: the company Behncke from Putzbrunn and the company OSPA from Mutlangen in Swabia. The company "corso sauna-manufaktur"



will be exhibiting its designer saunas. The site of RivieraPool Munich is this pool manufacturer's second exhibition centre for pool installations in southern Germany.

www.pools.bayern

RivieraPoolgarten in Neuötting, Bavaria

The RivieraPool exhibition to the east of Munich has linked stylish pool installations with picturesque garden landscapes since 2016. This symbiosis should inspire visitors to create their own dream garden. Whether business partner, customer or potential customer - everyone is warmly welcome. This is a unique mix of pool and garden installations.

"poolsplace" - Rheinau-Linx
Modern pool exhibition
over 1400 m².

A total of six manufacturers from the swimming-pool and swimming-pond industry present highlights from their range: Two ready-made swimming pools with classic filter technology, a natural pool and a swimming pond, both with chlorine-free crystal-clear water, whirlpools, showers and fountains, as well as an exclusive pool house. In Poolsplace, potential customers can find stylish new ideas and inspiration for their own pool garden or biopool, or simply good accessories for the pool they already have. The exhibition and consultation centre provides an insight into the world of pools. You can gain a comprehensive overview of the various pool types and shapes, as well as suitable

accessories. Poolsplace employees can provide advice to interested people directly on site. The displays show how materials, colours and plants work together. Swimming-pool specialist retailers, gardeners and landscapers, architects and planners can also come to the exhibition with their customers to show them a huge variety of pool design.

www.poolsplace.de

Our exhibition centres

in southern Germany

- **RivieraPool**garten
Hofquartier Taufkirchen
near Munich, Bavaria
- **RivieraPool**garten
Neuötting, Bavaria
- Exhibition centre
"poolsplace", Rheinau-Linx,
Baden-Württemberg





The Rengers Group

This family-run traditional company is established as one of the leading manufacturers of ready-made swimming pools in all of Europe with its RivieraPool® brand. Today, RivieraPools can be found in private pool gardens and indoor pool facilities, in hotels, on cruise liners and in municipal water parks.

The Rengers Group includes three plants in Germany and Slovakia, with a total of 200 employees. Rengers Kunststoffverarbeitungs GmbH in Dalum in the Emsland is responsible for production, and RivieraPool Fertigschwimmbad GmbH is responsible for the sale of all products. The production plant in Trnava in Slovakia pro-

duces for the markets in western and eastern Europe. RivieraPool presents different varieties of swimming pools, sauna plunge pools and whirlpools across an area of over 1,900 square metres at an exhibition in Geeste-Dalum which is unique in Europe. A Europe-wide sales network of certified professional partners and specialist retailers ensures expert service and on-site installation.

vide you with product details, installation proposals and individual solutions. They can provide all information from A to Z on water care.



Exhibitions across Germany

Book a consultation with your "Riviera-Partner or professional partner" on site, or come with him/her to visit one of our exhibition centres across Germany. Your specialist retailer is trained and can pro-

Your RivieraPool is delivered ...

either directly from the factory or from the retailer's warehouse. On delivery, the specialist retailer will be there on site, to look after its introduction and to provide instruction on all its functions and care of the water.

Rengers Kunststoffe



1964



- FOUNDATION of Rengers Kunststoffe by Gisela & Josef Rengers in Dalum

1970



- The first special transporters for swimming pools
- Expansion of the sales network

1976



- FOUNDATION of RivieraPool GmbH
- EXPANSION of the exhibition space

1993



- FOUNDATION of Reku Slovakia in Trnava, Slovakia

2000



- INTERMEDIATE STORAGE in Rossau: Logistics centre for east-west trade

2000-2005

2003



- OPENING of the new exhibition centre for swimming pools & whirlpools "POOLS.INFO" in Dalum



One company - three generations

Service

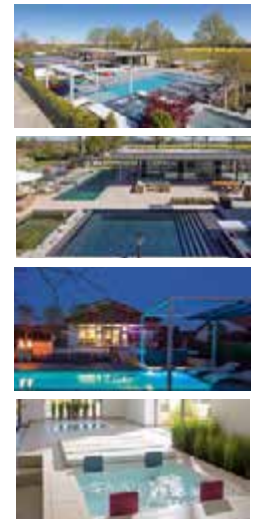
Your specialist retailer is our local partner for this and will look after any request you may have. Of course, there is a fast replacement-part service and a technical hotline to the factory. Each pool has its own order number. Each replacement part can still be identified, even after many years, and be re-ordered.

1964 - 2014 50 JAHRE RENGERS UNTERNEHMENSGRUPPE



50 years of the Rengers Group

OPENING of the largest exhibition of swimming pools and swimming ponds in Germany: RivieraPool garden in the Hofquartier in Taufkirchen near Munich.



- RECORD SWIMMING POOL IN ANNIVERSARY YEAR
The largest RivieraPool swimming pool is 20 metres long and 8 metres wide. It is one of a kind in form, function and equipment.



- OPENING of the RivieraPoolgarden in Neuötting in Bavaria



- 3 GOLDEN WAVES:
WINNER IN THE CATEGORY WHIRLPOOLS "STRATO PORTABLE"

The Innovation Award of **Schwimmbad & Sauna**

GOLDEN WAVE 2017

FURTHER AWARDS IN THE CATEGORY SWIMMING POOLS "MLINE" SERIES AND "SAUNA INFRARED/STEAM-BATH ACCESSORIES "ICE CUBE"

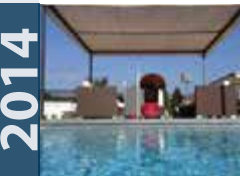


2017

The Innovation Award of **Schwimmbad & Sauna**
GOLDEN WAVE 2015
WINNER IN THE CATEGORY: SWIMMING POOLS "WETLOUNGE"



2015



2014

- OPENING OF POOLSPACE "World of Living" in Rheinau-Linx



2012

- OPENING OF THE RivieraPool garden in Geeste-Dalum



The Innovation Award of **Schwimmbad & Sauna**
GOLDEN WAVE 2011
WINNER IN THE CATEGORY: SWIMMING POOLS D-LINE SERIES



2011

The Innovation Award of **Schwimmbad & Sauna**
GOLDEN WAVE 2007
WINNER IN THE CATEGORY: SWIMMING POOLS SWIM & FUN SERIES



2007

- Classic XL – Currently the largest one piece swimming pool



STREBEL PRIZE for Gisela & Josef Rengers

- Award for their contribution to the swimming-pool industry



2006

2006

Pools from Germany.....



rivierapool.com

RivieraPool®

One of the leading
German manufacturers
of prefabricated swimming
pools, pool equipment
and whirlpools.
Member in the BSW.



RivieraPool Fertigschwimmbad GmbH • Klöcknerstraße 2 • D-49744 Geeste • Tel. +49 5937 660 • E-Mail: info@pools.de