

Installation and operating instructions

This is advance information, subject to alterations. In case of questions, please contact our Technical Department.

LED HT LIGHT



1. HT 201 / HT 228 underwater light

1.1	Technical data	Page	3
1.2	Control units for underwater light	Page	3

2. Installation

2.1	Assembly drawing RG niche	Page	4
2.2	Description	Page	5

3. Operating the control system with RGB-control

3.1	Pairing the remote control with the DMX controller	Page	8
3.2	Un-pairing the remote control from the DMX controller	Page	8
3.3	Manual remote control	Page	9

4. Terminal diagram

Page 10

5. Connection diagrams HT RGB 6/18

Page 11

Information:

Additional information can be obtained from our technical customer service department.

In the interests of technical progress, we reserve the right to make changes and improvements to our production processes without prior notification.

1. HT 201 / HT 228 underwater light



HT 201



HT 228

1.1 Technical data

The underwater lights in the HTC 201 and HTC 228 series are equipped with fixed connection cables that are 10 m in length. If an extension is required, a suitable cable with a minimum cross section as per the table must be used.

Article description	HT201C-WW	HT201C-RGB	HT228C-WW	HT228C-RGB
Article number	3 531 400	3 531 410	3 531 440	3 531 450
Operating voltage	12-15V AC/DC	12-15V AC/DC	12-15V AC/DC	12-15V AC/DC
Power	45 Watt	40 Watt	7 Watt	6 Watt
Lumen	4500 Lumen	2000 Lumen	700 Lumen	300 Lumen
Kelvin	2700 K		2700 K	
Cable length	10 m	10 m	10 m	10 m
Extension up to 25 m	2 x 2.5 mm ²	4 x 2.5 mm ²	2 x 1.5 mm ²	4 x 1.5 mm ²
Extension up to 50 m	2 x 4 mm ²	4 x 4 mm ²	2 x 2.5 mm ²	4 x 2.5 mm ²

Note:

- The failure of up to 3 LEDs on the small UWS (diam. 100) and up to 6 LEDs on the large UWS (diam. 170) are within the tolerance range and do not constitute grounds for complaint according to the manufacturer's specifications.
- Slightly different light colours may occur between the individual spotlights.

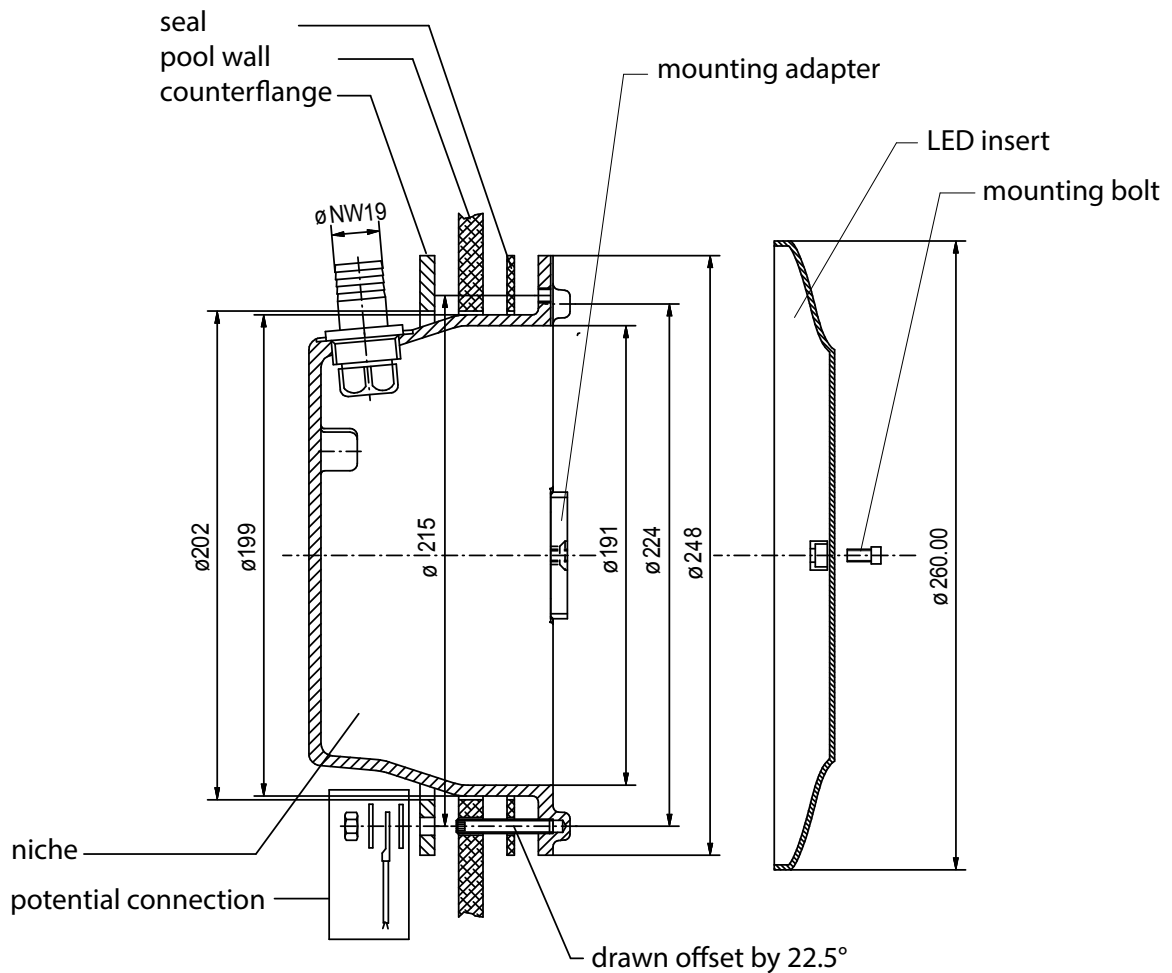
1.2 Control units for underwater light

When connecting the light, the max. output power of the control unit must not be exceeded by the sum of the individual outputs of the underwater light. A safety net of around 10% should be taken into account.

Article No.	Voltage	Max. output	Control
3531460	12-15V DC	192	1-10 V Dimmer
3531470	12-15V DC	480	1-10 V Dimmer
3531480	12-15V DC	192	DMX512
3531490	12-15V DC	480	DMX512

2. Installation

2.1 Assembly drawing RG niche



Niche with stud bolt and counter flange, Art.-Nr. L 4 101 050

LED light insert, warm white, Art.-Nr. 3 531 400

LED light insert, Art.-Nr. 3 531 410

2.2 Description



- Please handle the light carefully after unpacking.



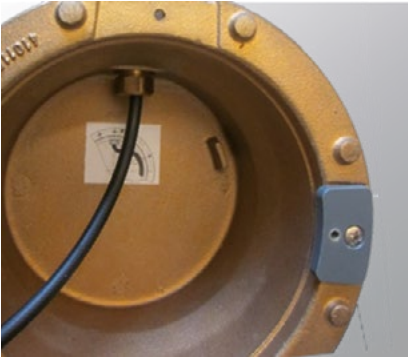
- Unscrew the rear bracket from the light. This is not required.



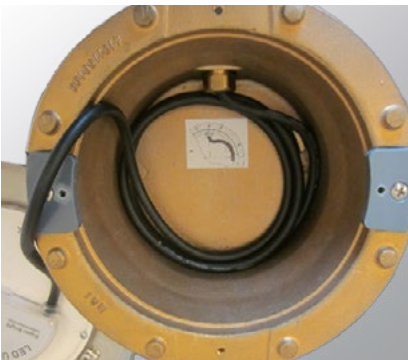
- The installation set for the red brass niche contains the adapters required and the fastening material.



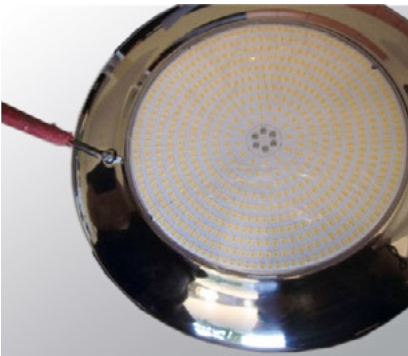
- Screw the two adapter segments using countersunk screws M6 x 12 onto the red brass niche (see photo).



- Pull the connection cable of the light through the cable bushing outwards and tighten the screw fittings.



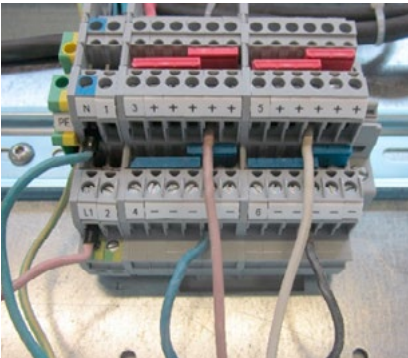
- Put the required cable length accurately into the niche.



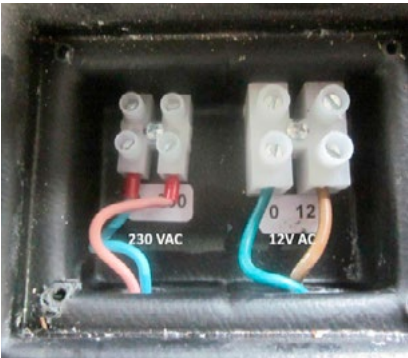
- Place the light on the niche and secure using screws M 5 x 10 (3 x hex key)



- Secure the light to the GRP niche with screws M 5 x 25 (3 x hex key).



- Connect the LED RGB light to the supplied switch box as per the terminal diagram.

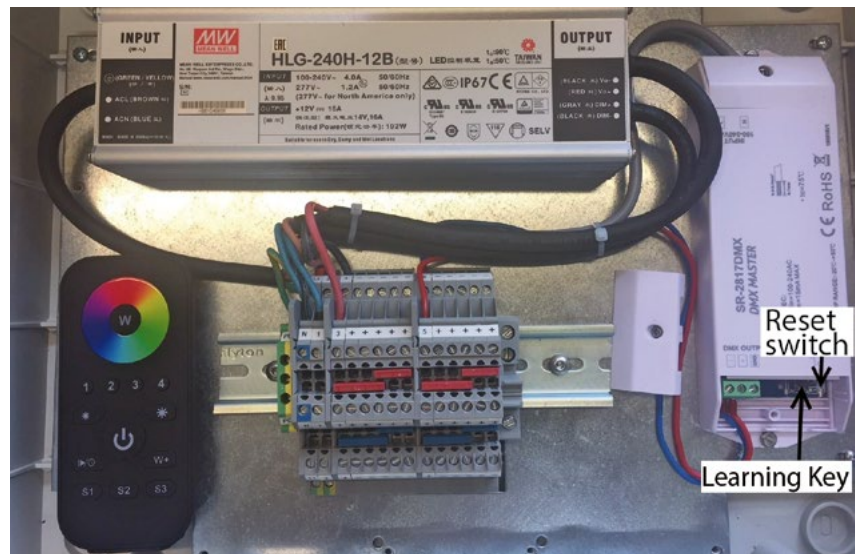


- Connect the LED warm white light to the supplied transformer.

Note:

The connection socket supplied must be grouted once the headlight has been installed. The grout is not included in the scope of delivery.

3. Operating the control system with RGB-control



3.1 Pairing the remote control with the DMX controller

In their supplied state, the remote control and DMX controller are paired with each other. If the switch box or remote control are ever changed, it may be necessary to pair them again.

To pair: Switch on the remote control, press the "Learning key" on the DMX controller and choose the zone on the remote control (1-4). Then press the colour selection. The remote control is paired.

Important: The receiver for the remote control is located in the switch box. The distance between the switch box and the remote control, especially walls, storey ceilings etc., can significantly impair the quality with which the switch box is able to receive the signals from the remote control. It is, therefore, strongly advised that the switch box is placed as close as possible to the swimming pool. If necessary, a test may be advisable before permanent installation.

3.2 Un-pairing the remote control from the DMX controller

Press the "Learning key" on the DMX controller for around 5 seconds; after that, the DMX controller is paired.

3.3 Manual remote control

On/Off

The remote control is first switched on by pressing the On/Off button. When this button is pressed, the lighting also switches on and shows the last colours selected. After a short period of inactivity, the remote control switches itself off automatically.

4 Zones

The remote control allows the pool to be divided up into 4 different illuminated zones and to control these zones separately. This function is not used in the standard version. The standard setting ensures that the entire pool is illuminated in the same way. The function is under zone 1.

Colour selection

Buttons on the colour selector wheel choose the required illumination colour.

Favourites buttons

If a favourite button is held down for more than 3 seconds, the pool colour under this button is saved. This colour can then be selected directly later on.

Brightness

Pressing the brightness – button gradually reduces the illumination. Pressing the brightness + button gradually increases the illumination.

Colour change

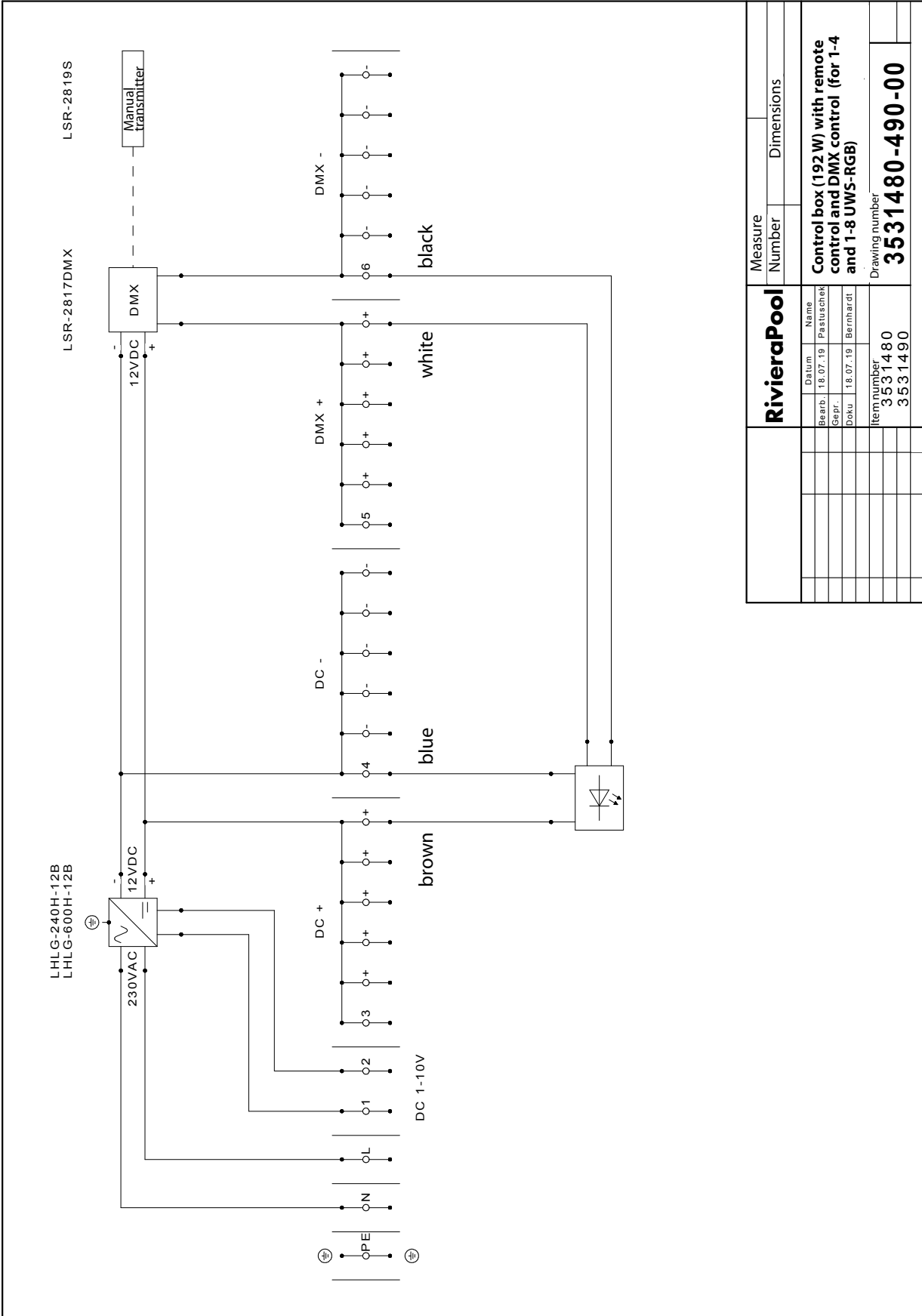
Pressing the colour change button, an automatic colour change sequence starts or stops.

W/W+

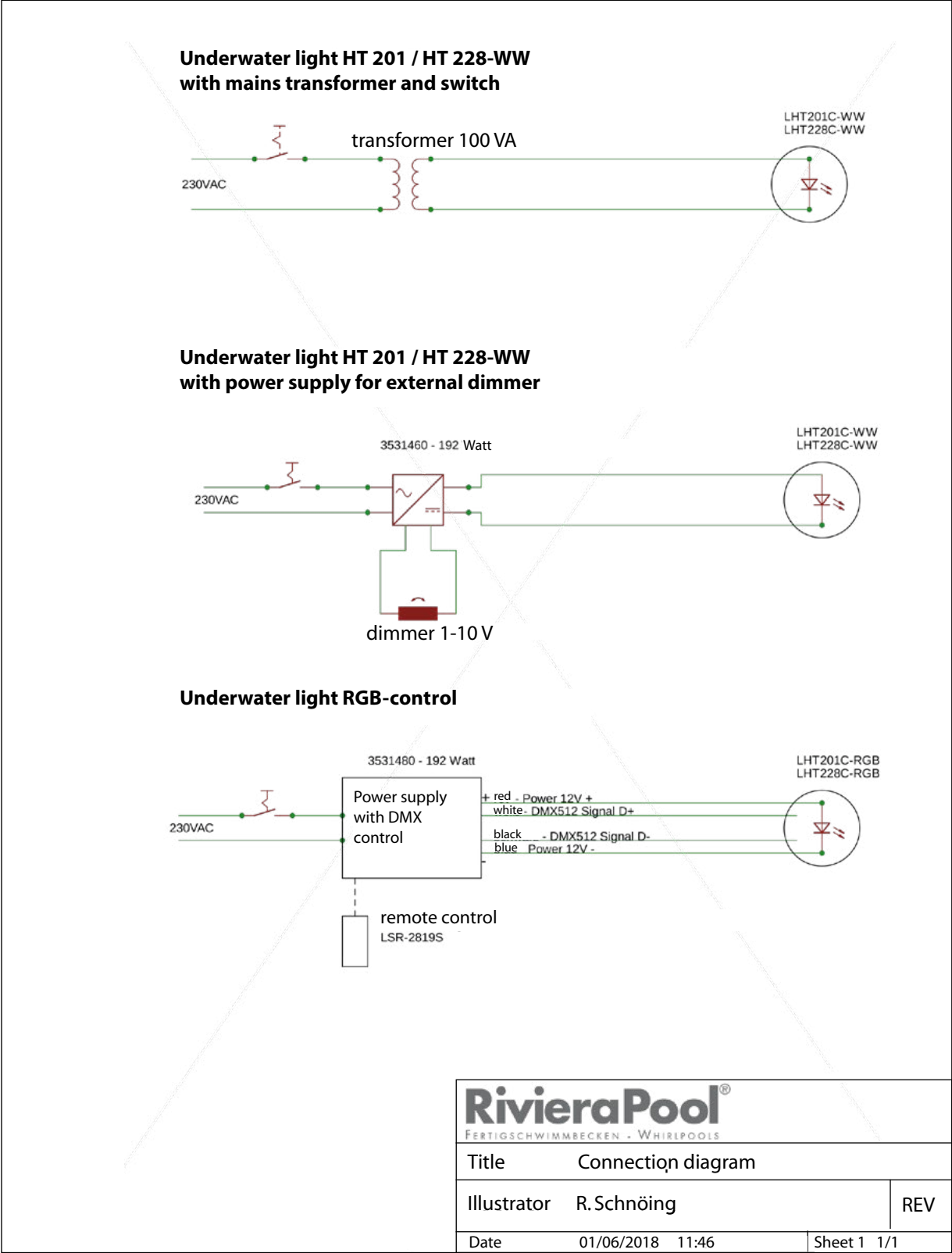
These buttons have no function.



4. Terminal diagram HT RGB



5. Connection diagrams HT RGB 6/18



RivieraPool®

**One of the leading
German manufacturers
of prefabricated swimming
pools, pool equipment
and whirlpools.
Member in the BSW.**



www.rivierapool.com